



SIDDHAYATAN



**LORD PARSHVANATH  
FOUNDATION INITIATIVE**

# SIDDHAYATAN – PROJECT BRIEF



‘Siddhayatan,’ a senior citizen complex for the Jain community, promotes the concept of active ageing. Located at the foot hills of the sacred Parasnath Hill, Siddhayatan will act as a perfect home for Jains allowing them to spend their golden age in a safe, secure and rejuvenating environment.

The senior citizen complex is coming up on a 2.75 acres land generously donated by Harakchand Santosh Kumar Jain Charitable Trust. The total construction area is approx. 1,68,000 sqft and is expected to be completed by September 2016.



# SIDDHAYATAN – SENIOR FRIENDLY ARCHITECTURE



- Wheel chair and walker enabled spaces & ramps
- Interconnected buildings to promote social interactions
- Spacious Lift to accommodate stretchers
- Wide doorways and corridors for wheel chair to swivel
- Bathrooms with wheelchair – accessible showers, grab bars and adjustable height showerheads
- Comfortable and user friendly door handles for people with arthritis
- Assisted living friendly rooms



# SIDDHAYATAN – ACCOMMODATION



## ○ INDEPENDENT LIVING

- Single Room 60
- Twin Share Rooms 36
- Double Rooms 30

## ○ ASSISTED LIVING

- Single Room 16
- Twin Share Rooms 16

The complex can accommodate 240 residents at full capacity



# SIDDHAYATAN – FACILITIES & AMENITIES



**Temple**



**Library**



**Multipurpose  
Hall**



**24 Hours  
Ambulance Services**



**Fitness Centre**



**Medical Assistance  
Center with Doctors**



**24 Hours Care Givers  
On Site**



**Yoga and  
Meditation**



**24 x 7 Security**



**Physiotherapy  
Assistance**



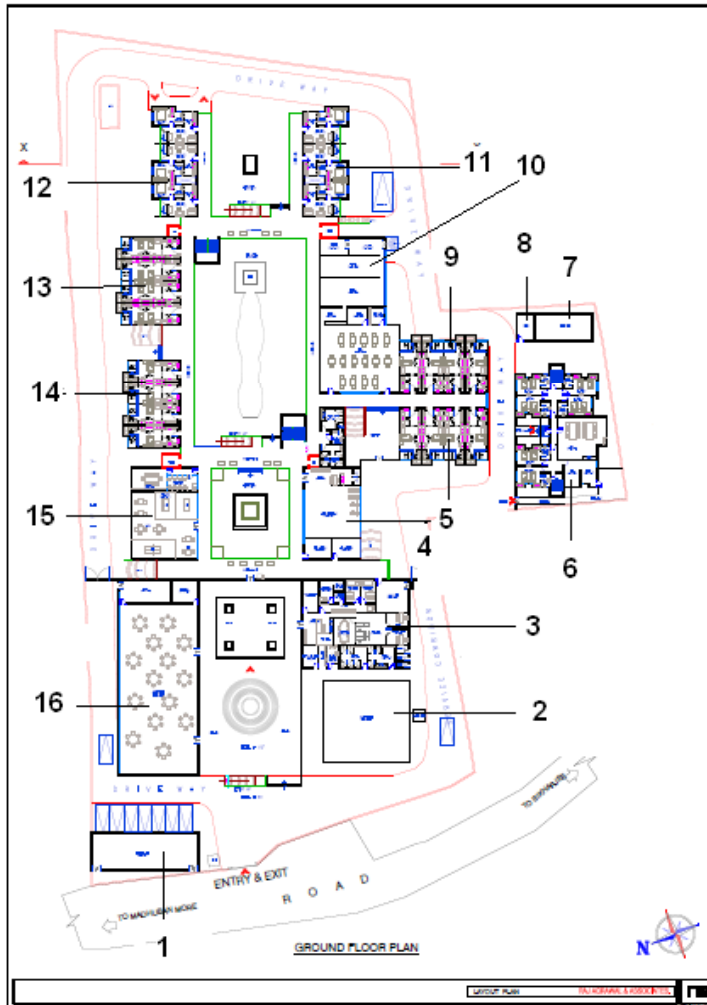
**Large Centralised  
Kitchen**



**Hobbies**



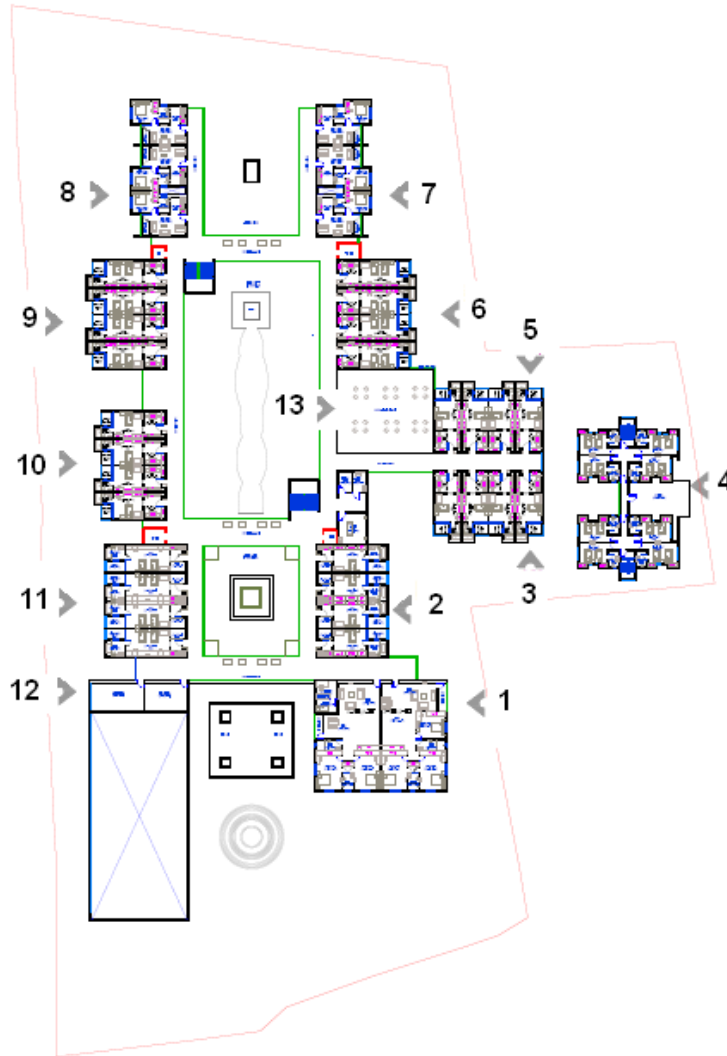
# SIDDHAYATAN – GROUND FLOOR PLAN



1. Grocery Store
2. Temple
3. Admin Office & Medical Centre
4. Gym, Physiotherapy & Hobby Centre
5. Single Independent Living
6. Staff Quarter
7. Mortuary
8. Energy Block
9. Single Independent Living
10. Kitchen & Dining Hall
11. Double Independent Living
12. Double Independent Living
13. Twin Independent Living
14. Single Independent Living
15. Games Room & Library
16. Multipurpose Hall



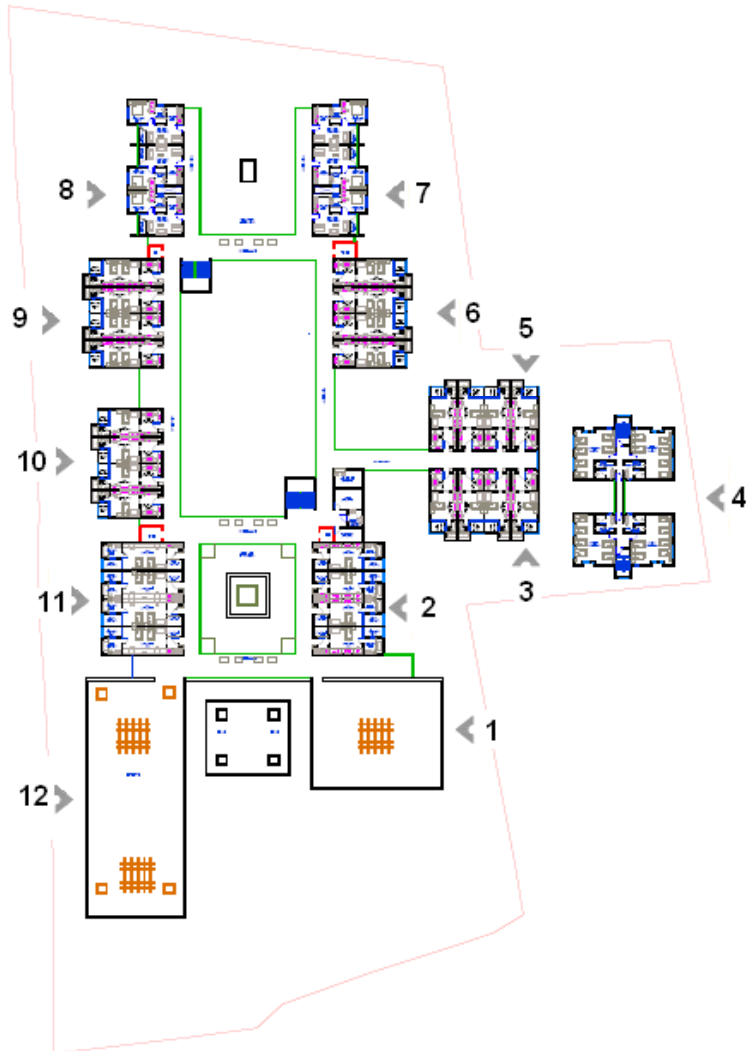
# SIDDHAYATAN – FIRST FLOOR PLAN



1. Guest Room
2. Single Assisted Living
3. Single Independent Living
4. Staff Quarters
5. Single Independent Living
6. Twin Independent Living
7. Double Independent Living
8. Double Independent Living
9. Twin Independent Living
10. Single Independent Living
11. Twin Assisted Living
12. Assisted Care Centre
13. Terrace Garden



# SIDDHAYATAN – SECOND FLOOR PLAN

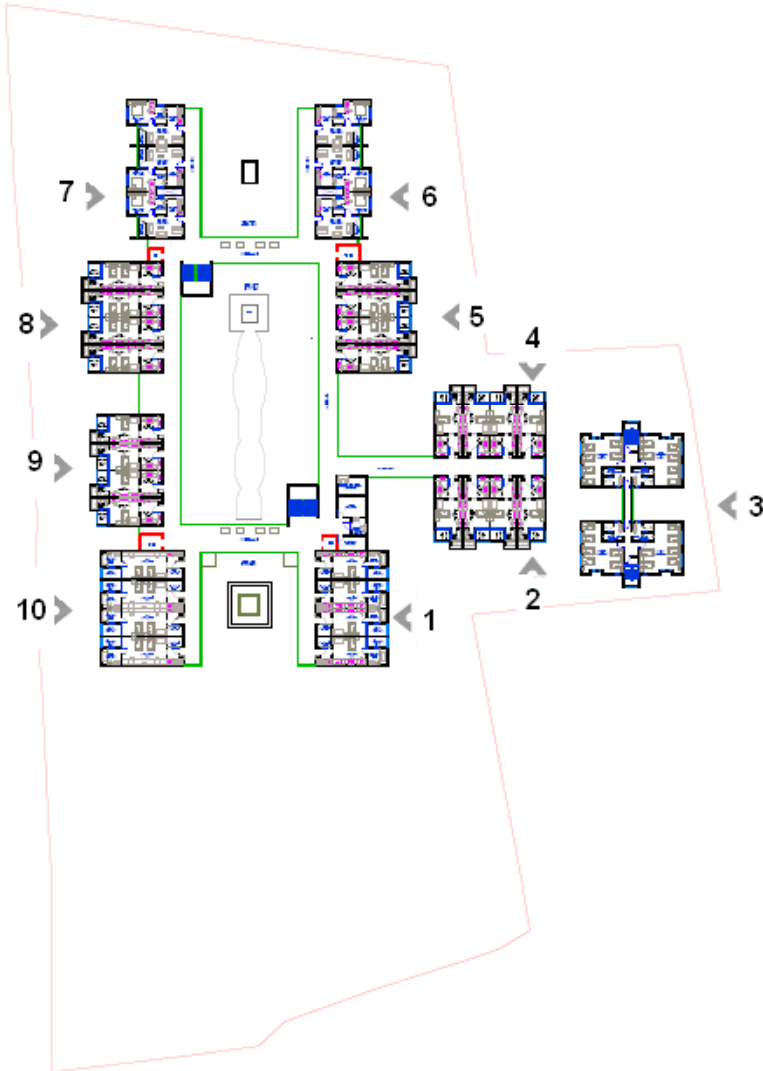


1. Terrace Garden
2. Assisted Single Living
3. Single Independent Living
4. Staff Quarter
5. Single Independent Living
6. Twin Independent Living
7. Double Independent Living
8. Double Independent Living
9. Twin Independent Living
10. Single Independent Living
11. Assisted Twin Living
12. Terrace Garden





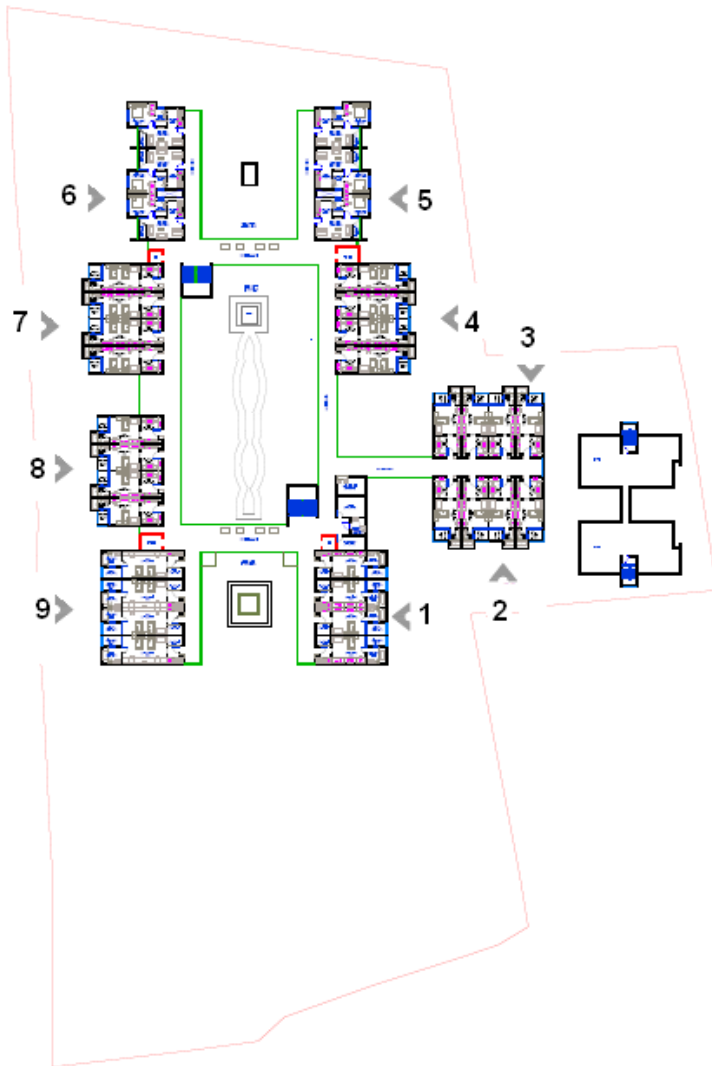
# SIDDHAYATAN – THIRD FLOOR



1. Assisted Single Living
2. Single Independent Living
3. Staff Quarter
4. Single Independent Living
5. Twin Independent Living
6. Double Independent Living
7. Double Independent Living
8. Twin Independent Living
9. Single Independent Living
10. Assisted Twin Living



# SIDDHAYATAN – FOURTH FLOOR PLAN



1. Assisted Single Living
2. Single Independent Living
3. Single Independent Living
4. Twin Independent Living
5. Double Independent Living
6. Double Independent Living
7. Twin Independent Living
8. Single Independent Living
9. Assisted Twin Living



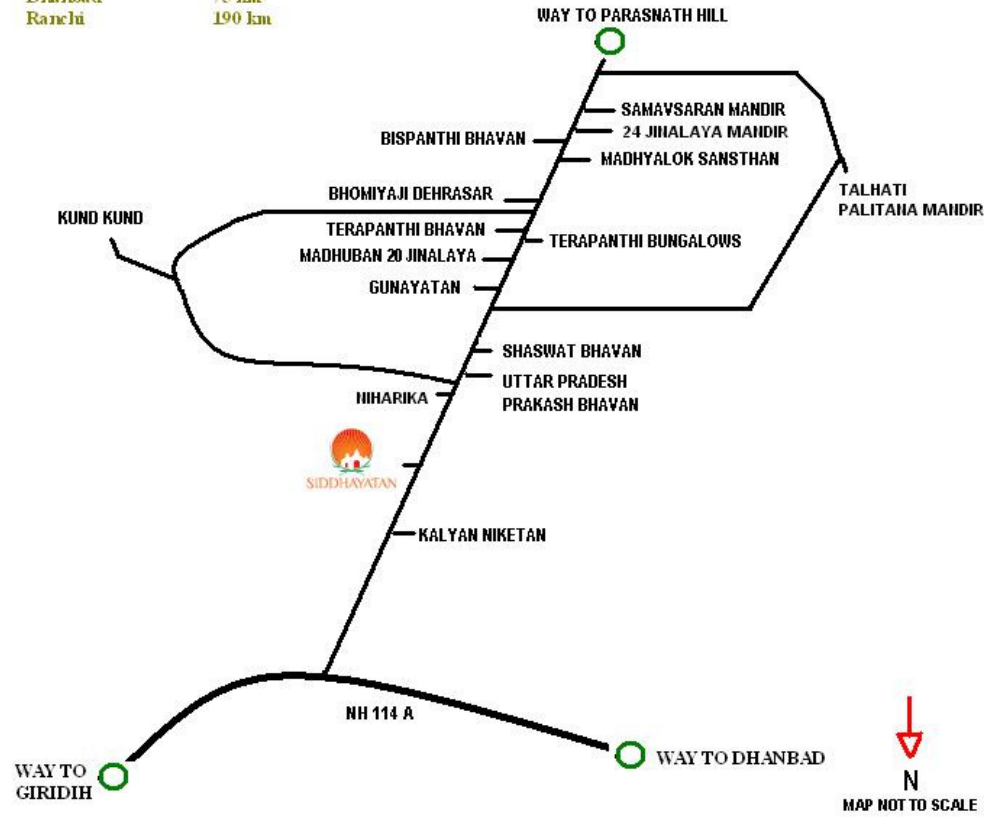
# SIDDHAYATAN – ROUTE MAP



## DISTANCE FROM MAIN PLACES

Kalyan Niketan	0.50 km
Shaswat Bhavan	1 km
Giridih	25 km
Bokaro	40 km
Dhanbad	75 km
Ranchi	190 km

## LOCATION MAP



# SIDDHAYATAN – ARCHITECT & CONSULTANTS



- Architect: Raj Agarwal & Associates
- Design Consultant: Age Ventures India
- Structural Engineer: SPA Consultants
- Electrical Consultant: Universal Power Transmission
- Landscaping: Tapan Maity



# SIDDHAYATAN – SITE PHOTOGRAPHS



SIDDHAYATAN

30 KVA DG SET INSTALLED



TEMPORARY STORE  
CONSTRUCTION IS PROGRESSING



WATER STORAGE PLACE



SECURITY POST



# SIDDHAYATAN – SITE PHOTOGRAPHS



EXCAVATION OF BOUNDARY WALL COMPLETED



STEEL STACKING YARD



ROCK EXCAVATION BY MANUAL LABOUR



# SIDDHAYATAN – SITE PHOTOGRAPHS

PLUM CONCRETING AND SOILING FOR MAINTAINING THE  
UNDULATION



REINFORCEMENT WORK FOR BOUNDARY WALL FOUNDATION



PCC FOR BOUNDARY WALL IS PROGRESSING



AREA READY FOR SHUTTERING, FOLLOWED BY RCC



THANK YOU



SIDDHAYATAN

